



# KANSAS DEPARTMENT FOR CHILDREN AND FAMILIES HANDOUTS

---

## CHILD WELFARE SYSTEM TASK FORCE

# Kansas Child Welfare Factsheet

## Adoption Statistics\*

### Awaiting Adoption

Currently, 458 children in Kansas are registered on the Adoption Exchange with no identified adoptive resource.  
For more information, visit: [www.adoptkskids.org](http://www.adoptkskids.org)

### Adoption Finalizations

In FY 2017, **758** children were adopted. Of the 758, **47.5%** percent were adopted by a foster parent; **49.7%** percent were adopted by a relative.

### Special Needs

Special Needs include physical disability, sibling group, developmental disabilities, medical condition, guarded prognosis, emotional disabilities and age. The largest represented group is "guarded prognosis," which makes up **35** percent of children adopted.

## Family Preservation Statistics

In FY 2016, **2,598** families received in-home family preservation services. Of this number, the presenting situations in the family included:

Non abuse/neglect	40.1%
Physical abuse	20.1%
Physical neglect	10.6%
Other maltreatment	29.1%

Currently, **82.6** percent of families referred for family preservation services do not have a child placed outside of the home into foster care during a one-year referral period.

Currently, **98.7** percent of families do not experience substantiated abuse or neglect during the first 90 days of family preservation participation.

Currently, more than **94.8** percent of families do not experience substantiated abuse or neglect between the time of referral and one year.

PRIMARY REASON FOR REMOVAL (FY2017)

Abuse/Neglect		Non Abuse/Neglect	
Physical Abuse	15%	Parental Drug Abuse	10%
Physical Neglect	17%	Parental Meth Use	5%
Lack of Supervision	16%	Child's Behavior Problem	5%
Emotional Abuse	8%	Caretakers Inability to Cope	5%
Sexual Abuse	4%	Incarceration of Parents	3%
Abandonment	5%	Inadequate Housing	2%
Medical Neglect	2%	Runaway	2%
		Not Attending School	1%
		Adult Alcohol Abuse	1%

	PERCENT	TOTAL
Reunification	58.71%	4,281
Custodianship/ Guardianship	1.41%	78
OPPLA	5.90%	399
Maintain in Family	0.40%	30
Adoption	33.57%	2,404

\*As of June 30, 2017.

PERMANENCY GOALS FOR CHILDREN IN DCF CUSTODY\*

## Foster Care Statistics

**7,192** children in foster care in Kansas. Of all the counties, Sedgwick has the most children in out-of-home placement, **1,043** (14.5 percent).

## Length of Stay in Foster Care

The average length of stay in foster care for children reunited with their families is nine months; for children adopted is 36 months; and 37 months for children who age out, as of June 30, 2017.

## Foster Care Licensing

Foster parents play a vital role in the child welfare process. Kansas currently has **2,755** licensed foster homes. In July 2015, Foster Care Licensing was transferred from the Kansas Department of Health and Environment (KDHE) to the Kansas Department for Children and Families (DCF).

## Foster Parents

In 2014, DCF created the position of Foster Parent and Youth Ombudsman to help foster parents navigate the child welfare process and to ensure their voices are heard when child placement decisions are made. The Foster Parent and Youth Ombudsman can be reached at 1-844-279-2306 or by email at [fosterparent@ks.gov](mailto:fosterparent@ks.gov).

June 2017

Family Foster Home	3,998
Relative	2,335
Group Residential	513
Pre-adoptive	207
Independent Living	56
Runaway	78
Maternity	5

## Child Protective Services Process

When a report of child abuse or neglect is made, DCF makes an initial assessment.

If the report meets the criteria for agency involvement, the case is investigated by a social worker or special investigator. Law enforcement may also investigate.

If it is determined that a child is unsafe, then a recommendation is made by Child Protective Services (CPS) or law enforcement to the court regarding what action should be taken.

The court then makes a decision. It is ultimately responsible for deciding when a child should be removed from a home.

The child may be placed in foster care or in the care of a relative. CPS must weigh the emotional harm to the child of removal against the likelihood of harm that the child could endure if he/she remains in the home.

In cases of non-abuse or neglect, such as lack of proper parental control, runaways or truancy, families may be referred to family preservation services, allowing the child to remain in the home.

DCF will always support keeping a child with his/her family when that is a safe option.

## Substantiated vs. Affirmed vs. Unsubstantiated

In 2016, DCF adopted a new findings structure to add clarity to the child welfare system process. After DCF's investigation is completed, the agency makes a finding regarding the allegations. The purpose of the finding is to determine if it's a valid report. A substantiated finding results in the alleged perpetrator not being allowed to work, reside or regularly volunteer in a child care facility regulated by KDHE or DCF. An unsubstantiated finding may still result in removal.

- An "unsubstantiated" finding means the facts and circumstances would conclude it is more likely than not (preponderance of the evidence) the alleged perpetrator's actions or inactions do not meet the abuse and/or neglect definitions, per applicable Kansas Statutes Annotated (K.S.A.) and Kansas Administrative Regulations (K.A.R.).
- An "affirmed" finding means that it is more likely than not (preponderance of the evidence) the alleged perpetrator's actions or inactions meet the abuse and/or neglect definition per applicable K.S.A. and K.A.R.
- When abuse and/or neglect of a child meets criteria to affirm, the facts and circumstances of the alleged incidents shall be evaluated to determine whether criteria for a "substantiated" case finding are met. A substantiated finding results in the perpetrator's name being placed on the Kansas Child Abuse/Neglect Central Registry.

## Parents Rights:

- To refuse to talk with DCF
- To know what was reported
- To request DCF services
- To know the DCF finding
- To appeal a substantiated finding

## Privatization

Since 1996, Kansas has been one of only a few states to privatize the majority of its child welfare services.

On July 1, 2013, foster care, adoption and reintegration services contracts were awarded to the following:

- DCF East and Kansas City Regions: KVC Kansas
- DCF West and Wichita Regions: St. Francis Community Services



\* DCF Service Center

## Kansas Child Welfare Goals:

- Help struggling families at the first sign of trouble, while children can safely be kept in the home, in an effort to reduce the number of children placed in out-of-home care
- Provide a more stable environment for children in out-of-home care by avoiding multiple transfers of custody and school placements
- Provide permanency for children in a shorter time period, whether through reintegration back into their home or, if needed, adoption

Report Child Abuse by calling 1-800-922-5330

## Kansas Child Welfare Enhancements and Improvements Progress Report

The Kansas Department for Children and Families is fully committed to its mission—to protect children, promote healthy families and encourage personal responsibility. Of the utmost importance is keeping children safe, especially when youth are in our care. In an ongoing effort to build upon our success as one of the safest child welfare systems in the country, DCF has developed an implementation plan that addresses the Legislative Post Audit recommendations.

### Response to LPA

### Implemented July 2018

#### Monthly In-Person Visits

- Review/revise policies.
- Create Child Welfare Compliance Unit for audit-level monitoring of contractors and staff.
- Implement best practices training on documentation.



#### Background Checks

- Complete annual checks on everyone 10 and older in foster homes.
- Enact real-time notification of foster parent arrests/convictions.
- Implement fingerprinting/relative placement background checks.



#### Kansas Protection Report Center

- Review policies and implement procedures to ensure timely assessments.



#### Casey Family Programs Recommendations

- Use intervention practice model.
- Implement evidence-based family preservation.
- Hire skilled staff at KPRC.
- Review staffing levels at KPRC.
- Track investigations per case worker.
- Redefine abuse/neglect categories.
- Modify safety/risk assessment tools.
- Reduce subjectivity from findings.



#### Capacity/Sleeping Space Exceptions in Foster Homes

- Improve ability to match data on location/characteristics of children in foster care with location/capabilities of licensed homes.



#### Foster Parent Financial Resources

- Review and assess financial documentation during licensing and renewal.



#### Safety Assessments

- Require Child Placing Agencies to assess safety of homes during visits.



#### Contractor Corrective Action

- Require foster care contractors to submit a corrective action plan.



#### Temporary Permit Reform

- End the practice of granting temporary permits to foster homes before statutory/regulatory standards are met.



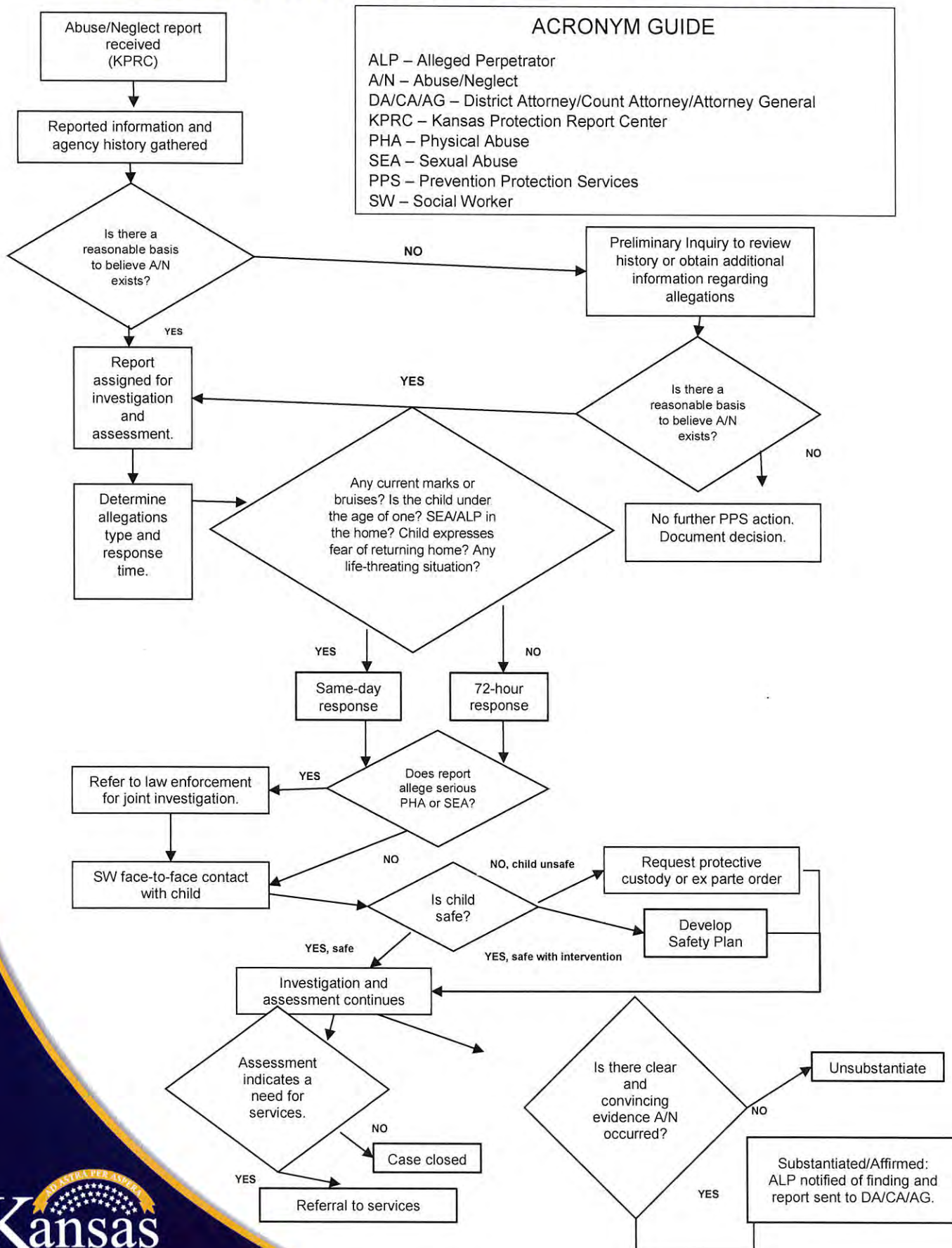
#### Foster Home Inspections

- Annual foster home inspections to be conducted by DCF, instead of child placing agencies, because of financial conflicts of interest.



ADDITIONAL MEASURES

# ASSESSMENT & PREVENTION FLOWCHART



# CHILD WELFARE SYSTEM

## State Agencies/Services

### Attorney General

Abuse, Neglect and  
Exploitation Unit  
Human Trafficking  
Child Death Review  
Board  
Domestic Violence

### KDADS

Oversight:  
CMHCs  
Home and  
Community  
Based Services  
PRTFs

### KDHE

Oversight:  
KanCare/Medicaid Services  
HealthCare Services  
Managed Care Organizations  
Infant-Toddler Services  
Division of Public Health  
County Health Departments

### KDOR

Free State  
ID for  
Youth in  
Foster Care

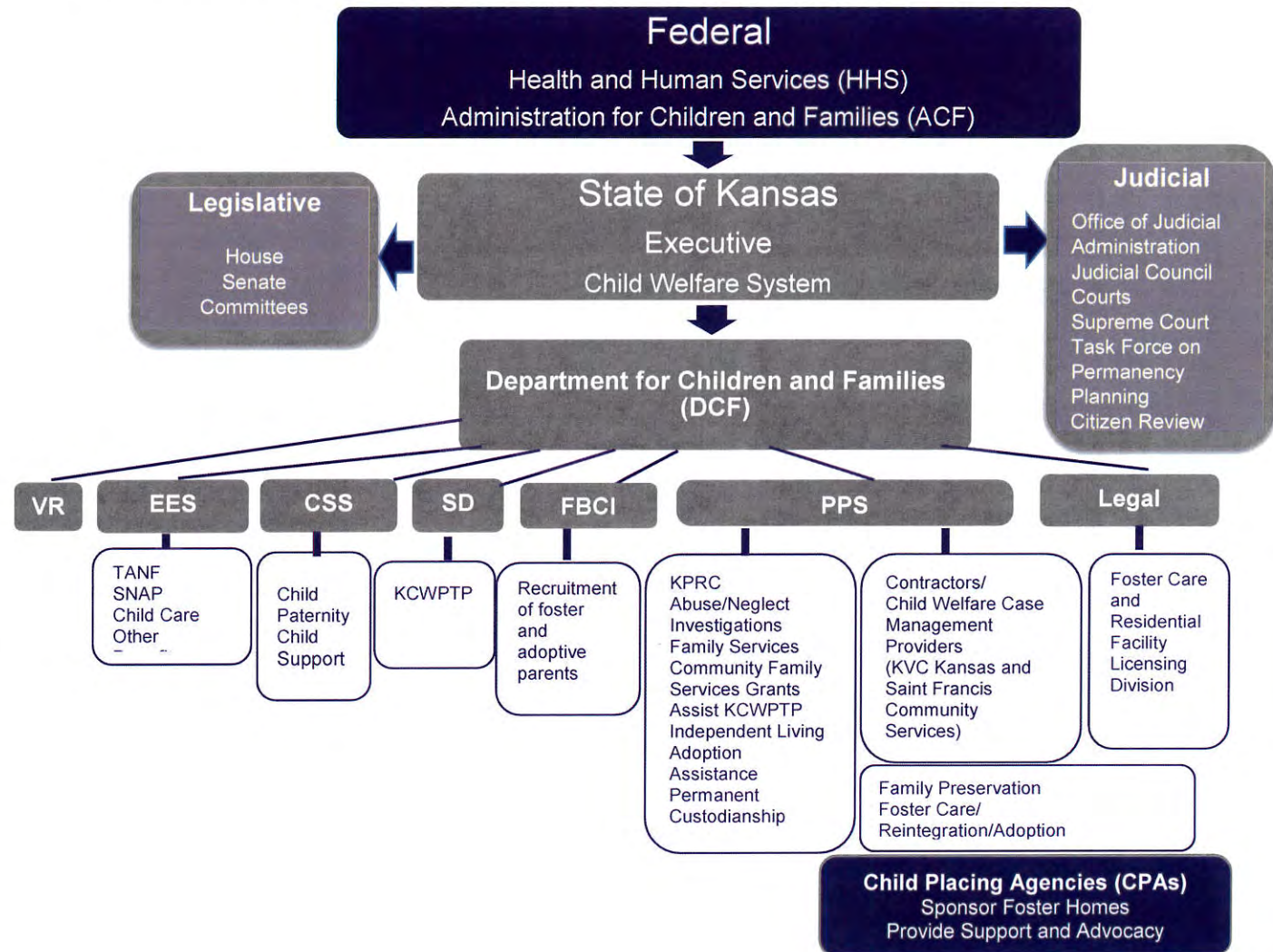
### KDOC

Juvenile Services  
Juvenile Intake and  
Assessment  
Services/Centers  
Interstate Compact for  
Juviles (ICJ)

### KSDE

Local School  
Districts  
Head Start

Last Updated: August 3, 2017



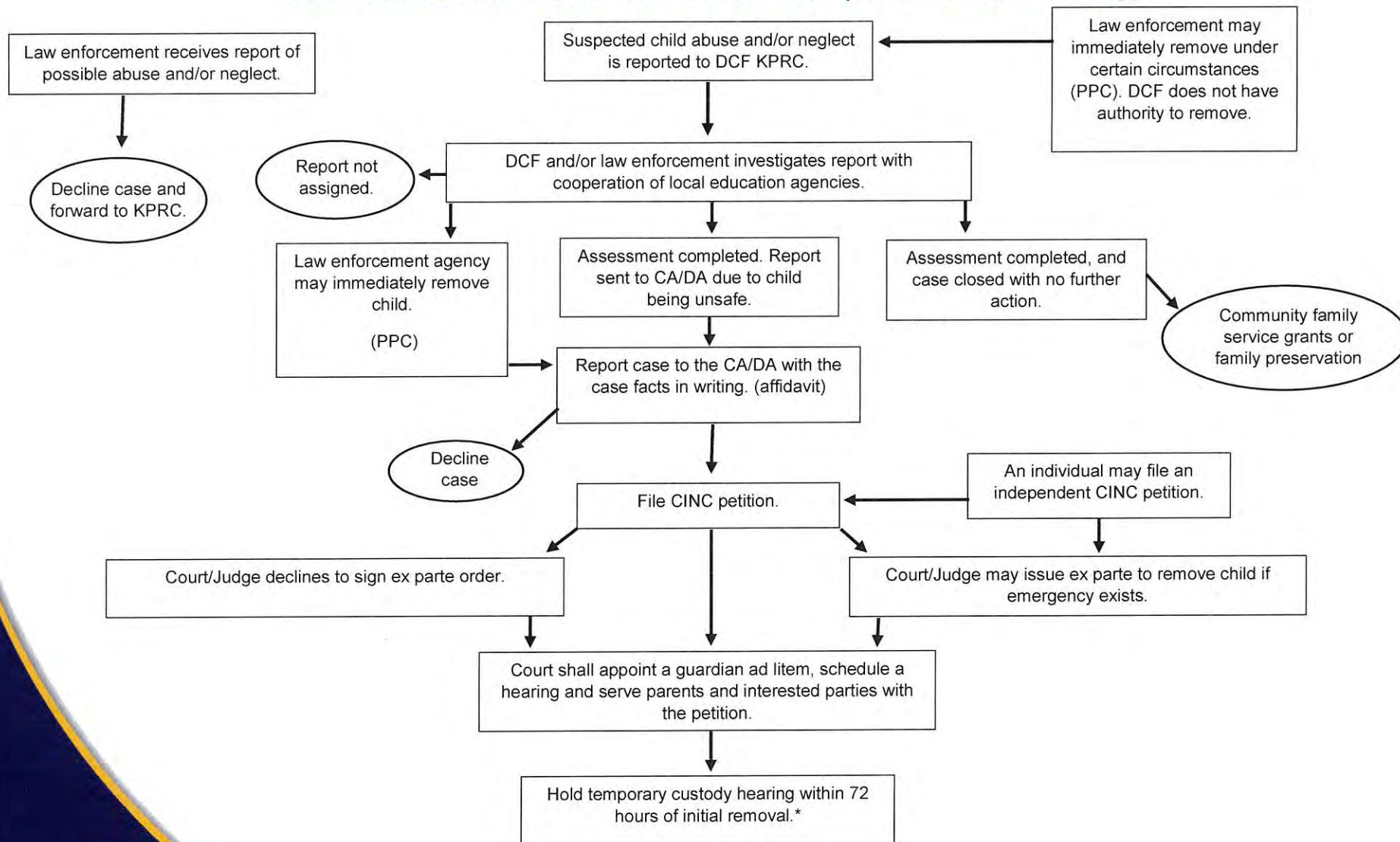
# CHILD WELFARE SYSTEM

## Other Entities/Organization Related to Child Welfare



# CHILD WELFARE IN KANSAS

## CHILD IN NEED OF CARE CASE PROCESS (K.S.A 38-2201 et. seq.)

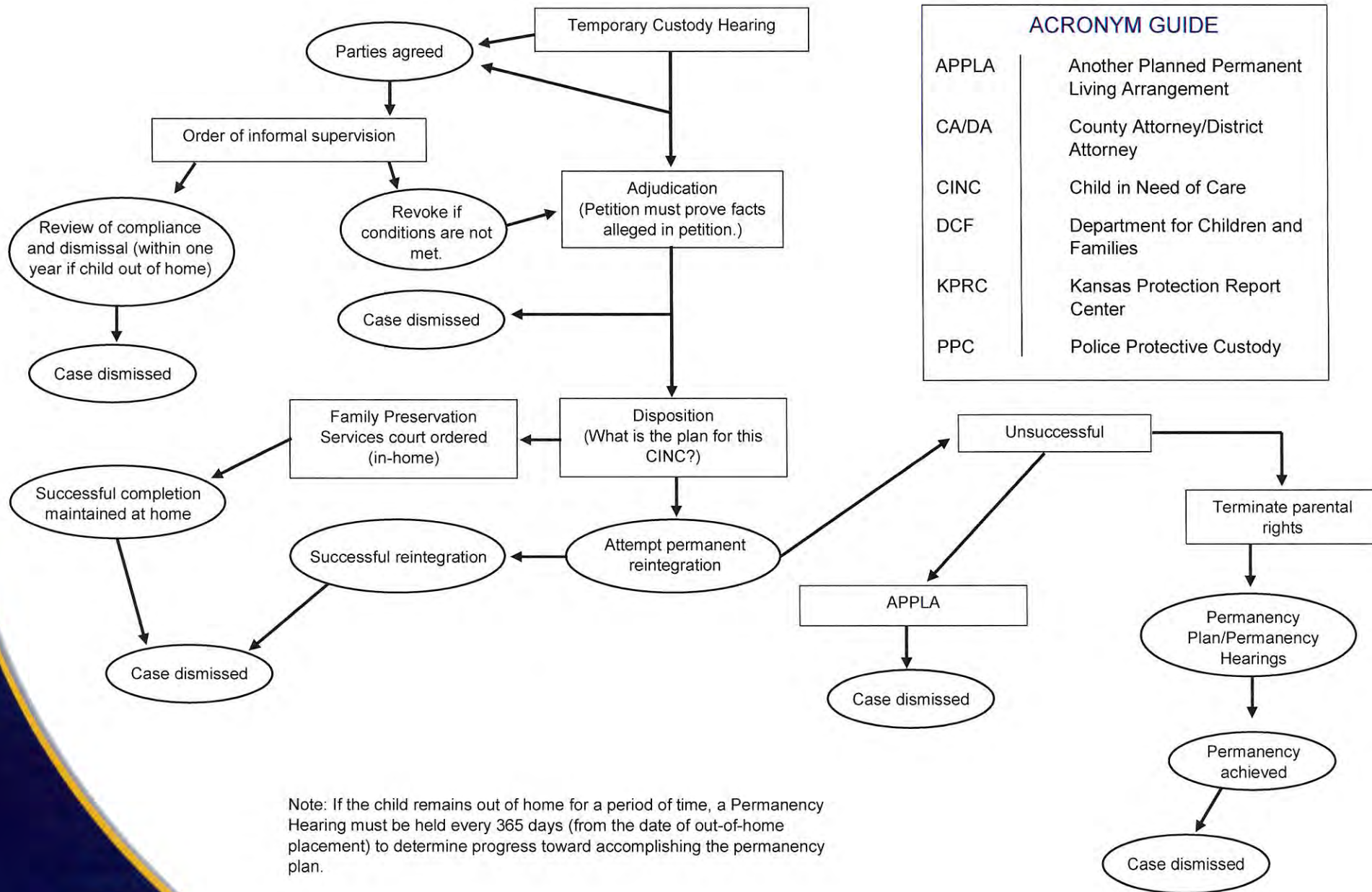


\*72 hours (excluding weekends and holidays) have elapsed since the child was initially removed from home through police protective custody or ex parte order of the court.



Department for Children  
and Families  
*Strong Families Make a Strong Kansas*

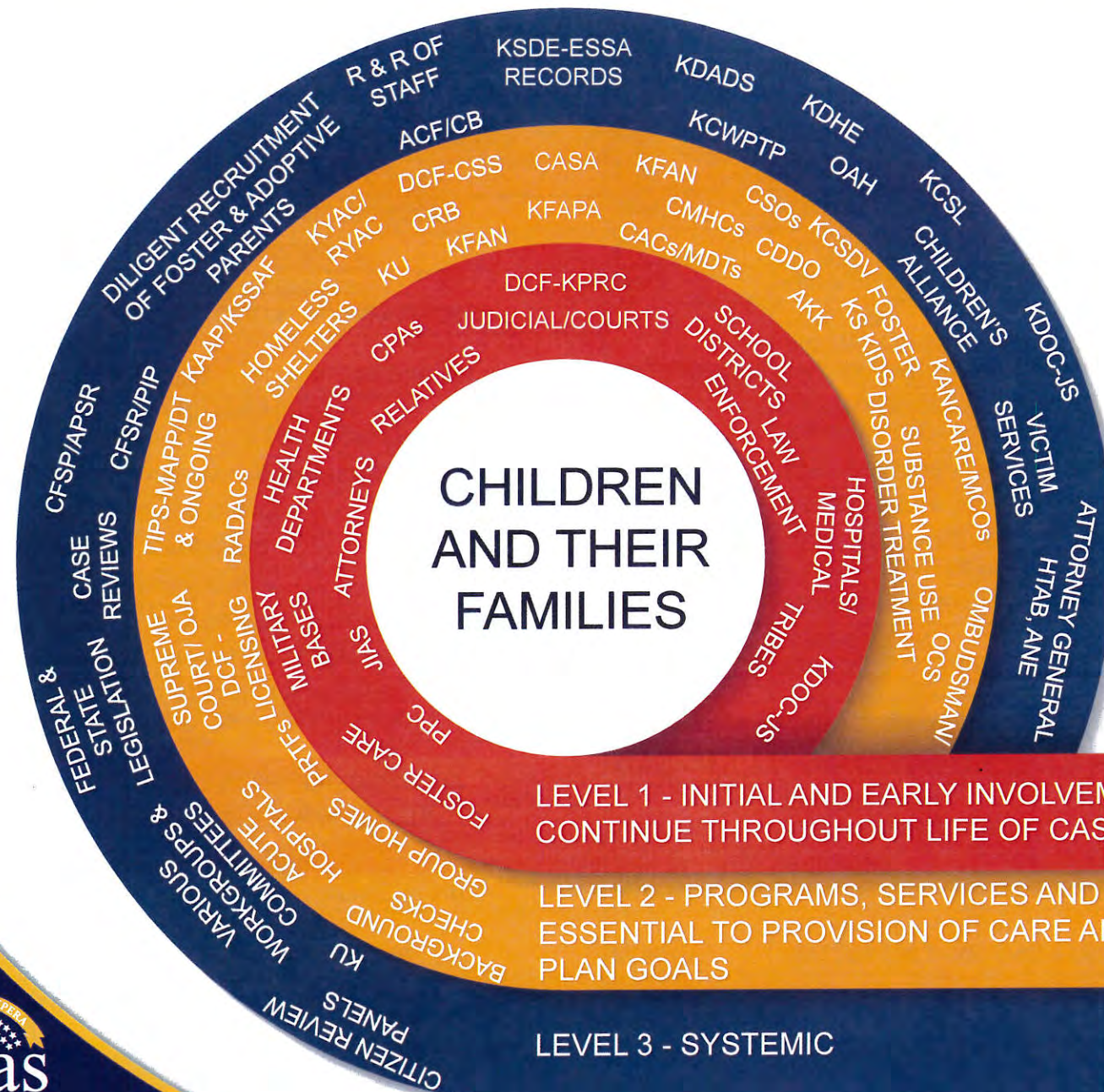
Original created by KU School of Social Welfare, 2010; updated by Kansas Department for Children and Families, 2017



ACRONYM GUIDE	
APPLA	Another Planned Permanent Living Arrangement
CA/DA	County Attorney/District Attorney
CINC	Child in Need of Care
DCF	Department for Children and Families
KPRC	Kansas Protection Report Center
PPC	Police Protective Custody

Note: If the child remains out of home for a period of time, a Permanency Hearing must be held every 365 days (from the date of out-of-home placement) to determine progress toward accomplishing the permanency plan.

# THE CHILD WELFARE SYSTEM IN KANSAS



# THE CHILD WELFARE SYSTEM IN KANSAS

## KEY FOR CHILD WELFARE ACRONYMS

ACF/CB	ADMINISTRATION FOR CHILDREN AND FAMILIES/CHILDREN'S BUREAU	KCWPTP	KANSAS CHILD WELFARE PROFESSIONAL TRAINING PROGRAM
ANE UNIT	ABUSE, NEGLECT, AND EXPLOITATION UNIT	KDADS	KANSAS DEPARTMENT FOR AGING AND DISABILITY SERVICES
CAC	CHILD ADVOCACY CENTERS	KDHE	KANSAS DEPARTMENT OF HEALTH AND ENVIRONMENT
CASA	COURT APPOINTED SPECIAL ADVOCATE		
CDDO	COMMUNITY DEVELOPMENTAL DISABILITY ORGANIZATION	KDOC - JS	KANSAS DEPARTMENT OF CORRECTIONS- JUVENILE SERVICES
CFSP/APSR	CHILD AND FAMILY SERVICES PLAN/ANNUAL PROGRESS AND SERVICES REPORT	KFAN	KANSAS FAMILY ADVISORY NETWORK
CFSR	CHILDREN AND FAMILIES SERVICES REVIEW	KFAPA	KANSAS FOSTER AND ADOPTIVE PARENT ASSOCIATION
CMHC	COMMUNITY MENTAL HEALTH CENTER	KPRC	KANSAS PROTECTION AND REPORTING CENTER
CPA	CHILD PLACING AGENCY	KSCDV	KANSAS COALITION AGAINST SEXUAL AND DOMESTIC VIOLENCE
CRB	CITIZEN REVIEW BOARD	KSDE	KANSAS STATE DEPARTMENT OF EDUCATION
CSO	COURT SERVICES OFFICER	KVC	KVC BEHAVIORAL HEALTH CARE, INC
CWCMP	CHILD WELFARE CASE MANAGEMENT PROVIDER	KYAC/RVAC	KANSAS YOUTH ADVISORY COUNCIL/REGIONAL YOUTH ADVISORY COUNCILS
DCF-A&P	DEPARTMENT FOR CHILDREN AND FAMILIES- ASSESSMENT AND PREVENTION	TIPS-MAPP/DT	TRAUMA-INFORMED MODEL APPROACH TO PARTNERSHIPS IN PARENTING/DECIDING TOGETHER
DCF-CSS	DEPARTMENT FOR CHILDREN- CHILD SUPPORT SERVICES		
DCF-OCS	DEPARTMENT FOR CHILDREN AND FAMILIES - OFFICE OF CUSTOMER SERVICE	MCO	MANAGED CARE ORGANIZATION (MEDICAID)
ESSA	EVERY STUDENT SUCCEEDS ACT	MDT	MULTI DISCIPLINARY TEAM
HCBS	HOME AND COMMUNITY BASED SERVICES	OAH	OFFICE OF ADMINISTRATIVE HEARINGS
HTAB	HUMAN TRAFFICKING ADVISORY BOARD	OJA	OFFICE OF JUDICIAL ADMINISTRATION
ICPC	INTERSTATE COMPACT ON THE PLACEMENT OF CHILDREN	PIP	PROGRAM IMPROVEMENT PLAN
JIAS	JUVENILE INTAKE AND ASSESSMENT SERVICES	PPC	POLICE PROTECTIVE CUSTODY
KAPP	KANSAS ASSESSMENT PERMANENCY PROJECT - 5 YEAR FEDERAL GRANT	PRTF	PSYCHIATRIC RESIDENTIAL TREATMENT FACILITIES
KSSAF	KANSAS SERVES SUBSTANCE AFFECTED FAMILIES - 5 YEAR FEDERAL GRANT	RADAC	REGIONAL ALCOHOL AND DRUG ASSESSMENT CENTER
KCSL	KANSAS CHILDRENS SERVICE LEAGUE	SFCS	SAINT FRANCIS COMMUNITY SERVICES

# Kansas Department for Children and Families

## Prevention and Protection Services Child Welfare Reports and Resources/Public Website Links

State (DCF/PPS) & Federal (HHS/ACF/CB)

### DCF Child Welfare Practice Model Link

<http://www.dcf.ks.gov/Agency/KCWPTP/Pages/ChildWelfarePracticeModel.aspx>

## 1. KANSAS PROTECTION REPORT CENTER (KPRC)

### a. Reports Received

[http://www.dcf.ks.gov/services/PPS/Documents/FY2017DataReports/CPS/CPSintakereports\\_ReceivedFY17.pdf](http://www.dcf.ks.gov/services/PPS/Documents/FY2017DataReports/CPS/CPSintakereports_ReceivedFY17.pdf)

### b. Reports Assigned

[http://www.dcf.ks.gov/services/PPS/Documents/FY2017DataReports/CPS/CPSintakereports\\_AssignedFY17.pdf](http://www.dcf.ks.gov/services/PPS/Documents/FY2017DataReports/CPS/CPSintakereports_AssignedFY17.pdf)

### c. CHILD ABUSE AND NEGLECT REGISTRY

## 2. ASSESSMENT & PREVENTION

### a. Reports assigned to Assess Alleged Maltreatment-SFY17

[http://www.dcf.ks.gov/services/PPS/Documents/FY2017DataReports/CPS/Rprttypes\\_MaltreatmentrsnFY17.pdf](http://www.dcf.ks.gov/services/PPS/Documents/FY2017DataReports/CPS/Rprttypes_MaltreatmentrsnFY17.pdf)

### b. Timely Contact with Victim / Family-SFY17

[http://www.dcf.ks.gov/services/PPS/Documents/FY2017DataReports/CPS/Timely\\_Contact\\_FY17.pdf](http://www.dcf.ks.gov/services/PPS/Documents/FY2017DataReports/CPS/Timely_Contact_FY17.pdf)

## 3. IN-HOME

### a. FAMILY PRESERVATION

#### i. Family Preservation In Home-SFY17

[http://www.dcf.ks.gov/services/PPS/Documents/FY2017DataReports/InHome-FamilyPres/FPrefsum\\_DCFregFY17.pdf](http://www.dcf.ks.gov/services/PPS/Documents/FY2017DataReports/InHome-FamilyPres/FPrefsum_DCFregFY17.pdf)

#### ii. Presenting Situations for Family Preservation Referrals-SFY17

[http://www.dcf.ks.gov/services/PPS/Documents/FY2017DataReports/InHome-FamilyPres/Pressituation\\_FamilyPresFY17.pdf](http://www.dcf.ks.gov/services/PPS/Documents/FY2017DataReports/InHome-FamilyPres/Pressituation_FamilyPresFY17.pdf)

## **b. FAMILY SERVICES**

### **i. Family Services Cases Initiated-SFY17**

[http://www.dcf.ks.gov/services/PPS/Documents/FY2017DataReports/InHome-FamilyServices/FamilyServices\\_FY17.pdf](http://www.dcf.ks.gov/services/PPS/Documents/FY2017DataReports/InHome-FamilyServices/FamilyServices_FY17.pdf)

### **ii. Presenting Situations for Family Service Referrals-SFY17**

[http://www.dcf.ks.gov/services/PPS/Documents/FY2017DataReports/InHome-FamilyServices/Pressituation\\_FamilyServicesFY17.pdf](http://www.dcf.ks.gov/services/PPS/Documents/FY2017DataReports/InHome-FamilyServices/Pressituation_FamilyServicesFY17.pdf)

## **c. COMMUNITY BASED FAMILY SERVICES**

### **i. Children Remain at Home During Community Based Family Services (During Open Case) SFY17**

<http://www.dcf.ks.gov/services/PPS/Documents/FY2017DataReports/InHome-FamilyServices/ChildrenRemainAtHomeDuringCommunityBasedFamilyServicesFY2017.pdf>

### **ii. Children Remain at Home During Community Based Family Services (365 days Post Conclusion) SFY17**

<http://www.dcf.ks.gov/services/PPS/Documents/FY2017DataReports/InHome-FamilyServices/ChildrenAtHomePostClosureCommunityBasedFamilyServicesFY2017.pdf>

### **iii. Families referred to Community Based Family Services will not be Referred to Family Preservation Services (180 days) SFY17**

[http://www.dcf.ks.gov/services/PPS/Documents/FY2017DataReports/InHome-FamilyServices/CommunityBasedFamilyServicesW\\_NoFP180dysFY2017.pdf](http://www.dcf.ks.gov/services/PPS/Documents/FY2017DataReports/InHome-FamilyServices/CommunityBasedFamilyServicesW_NoFP180dysFY2017.pdf)

### **iv. Children are Safe from Abuse & Neglect by Parent or Caregiver (365 Days) SFY17**

<http://www.dcf.ks.gov/services/PPS/Documents/FY2017DataReports/InHome-FamilyServices/ChildrenSafeAfterCommunityBasedFamilyServicesFY2017.pdf>

## 4. FOSTER CARE

- a. **Removals, Exits and out of Home Report-SFY17**  
[http://www.dcf.ks.gov/services/PPS/Documents/FY2017DataReports/FCAD\\_Summary/FACTSRemovalsExitsOOHSFY17.pdf](http://www.dcf.ks.gov/services/PPS/Documents/FY2017DataReports/FCAD_Summary/FACTSRemovalsExitsOOHSFY17.pdf)
- b. **Children in Out of Home by Placement Setting-SFY17**  
[http://www.dcf.ks.gov/services/PPS/Documents/FY2017DataReports/FCAD\\_Summary/PlacementbyRegionFY17.pdf](http://www.dcf.ks.gov/services/PPS/Documents/FY2017DataReports/FCAD_Summary/PlacementbyRegionFY17.pdf)
- c. **Children in Out of Home by Permanency Goal-SFY17**  
[http://www.dcf.ks.gov/services/PPS/Documents/FY2017DataReports/FCAD\\_Summary/PlacementPermGoalFY17.pdf](http://www.dcf.ks.gov/services/PPS/Documents/FY2017DataReports/FCAD_Summary/PlacementPermGoalFY17.pdf)
- d. **Children in Out of Home by Age and Gender-SFY17**  
[http://www.dcf.ks.gov/services/PPS/Documents/FY2017DataReports/FCAD\\_Summary/AgeGenderReportFY17.pdf](http://www.dcf.ks.gov/services/PPS/Documents/FY2017DataReports/FCAD_Summary/AgeGenderReportFY17.pdf)
- e. **Length of Stay and Reason for Ending Out of Home Placement-SFY17**  
[http://www.dcf.ks.gov/services/PPS/Documents/FY2017DataReports/FCAD\\_Summary/LengthofstayFY2017.pdf](http://www.dcf.ks.gov/services/PPS/Documents/FY2017DataReports/FCAD_Summary/LengthofstayFY2017.pdf)

## 5. ADOPTION

- a. **Adoptions Finalized-SFY17**  
[http://www.dcf.ks.gov/services/PPS/Documents/FY2017DataReports/FCAD\\_Summary/adoptions\\_finalizedFY17.pdf](http://www.dcf.ks.gov/services/PPS/Documents/FY2017DataReports/FCAD_Summary/adoptions_finalizedFY17.pdf)
- b. **FFY 1995-2016 Adoptions Finalized Table**  
<http://www.dcf.ks.gov/services/PPS/Pages/HistoricalFFYAdoptionsFinalized.aspx>

## 6. INDEPENDENT LIVING

- a. **Independent Living / Self Sufficiency Services Annual Report-SFY16**  
[http://www.dcf.ks.gov/services/PPS/Documents/FY2016DataReports/IndependentLiving/SSIS\\_AnnualReportSFY2016.pdf](http://www.dcf.ks.gov/services/PPS/Documents/FY2016DataReports/IndependentLiving/SSIS_AnnualReportSFY2016.pdf)
- b. **IL Information Link on Public Website**  
<http://www.dcf.ks.gov/services/PPS/Pages/IndependentLivingProgram.aspx>
- c. **NYTD Information Link on Public Website**  
<http://www.dcf.ks.gov/services/PPS/Pages/NYTD.aspx>

## 7. OUTCOMES (FEDERAL & STATE)

### a. Adoption Outcomes

#### i. Progress Towards Adoption (Adopted in Less than 12 months from Legal Freedom)-SFY17

[http://www.dcf.ks.gov/services/PPS/Documents/FY2017DataReports/FCAD\\_ContractOutcomes/Adoption\\_LegallyFree\\_12months\\_FY2017.pdf](http://www.dcf.ks.gov/services/PPS/Documents/FY2017DataReports/FCAD_ContractOutcomes/Adoption_LegallyFree_12months_FY2017.pdf)

#### ii. Timely Adoption (Less than 24 months)-SFY17

[http://www.dcf.ks.gov/services/PPS/Documents/FY2017DataReports/FCAD\\_ContractOutcomes/TimelyAdoption\\_24months\\_FY2017.pdf](http://www.dcf.ks.gov/services/PPS/Documents/FY2017DataReports/FCAD_ContractOutcomes/TimelyAdoption_24months_FY2017.pdf)

### b. Permanency Outcomes

#### i. Permanency in 12 months for children entering Foster Care—SFY17

[http://www.dcf.ks.gov/services/PPS/Documents/FY2017DataReports/FCAD\\_ContractOutcomes/Permanencyin12Months-EnteringCareSFY17.pdf](http://www.dcf.ks.gov/services/PPS/Documents/FY2017DataReports/FCAD_ContractOutcomes/Permanencyin12Months-EnteringCareSFY17.pdf)

#### ii. Permanency in 12 months for children entering Foster Care 12 to 23 months—SFY17

[http://www.dcf.ks.gov/services/PPS/Documents/FY2017DataReports/FCAD\\_ContractOutcomes/Permanencyin12Months-InCare12-23SFY17.pdf](http://www.dcf.ks.gov/services/PPS/Documents/FY2017DataReports/FCAD_ContractOutcomes/Permanencyin12Months-InCare12-23SFY17.pdf)

#### iii. Permanency in 12 months for children entering Foster Care 24 months or longer-SFY17

[http://www.dcf.ks.gov/services/PPS/Documents/FY2017DataReports/FCAD\\_ContractOutcomes/Permanencyin12Months-InCare24OrLongerSFY17.pdf](http://www.dcf.ks.gov/services/PPS/Documents/FY2017DataReports/FCAD_ContractOutcomes/Permanencyin12Months-InCare24OrLongerSFY17.pdf)

### c. Well-Being Outcomes

#### i. Children Live with Relatives-SFY17

[http://www.dcf.ks.gov/services/PPS/Documents/FY2017DataReports/FCAD\\_ContractOutcomes/LiveswithRelative\\_FY17.pdf](http://www.dcf.ks.gov/services/PPS/Documents/FY2017DataReports/FCAD_ContractOutcomes/LiveswithRelative_FY17.pdf)

#### ii. Sibling Placement-SFY17

[http://www.dcf.ks.gov/services/PPS/Documents/FY2017DataReports/FCAD\\_ContractOutcomes/SiblingPlacement\\_FY17.pdf](http://www.dcf.ks.gov/services/PPS/Documents/FY2017DataReports/FCAD_ContractOutcomes/SiblingPlacement_FY17.pdf)

## 8. FEDERAL MONITORING

### a. **IV-B Child and Family Services Plan (CFSP) & Annual Progress & Services Report (APSR)**

<http://www.dcf.ks.gov/services/PPS/Documents/Other/TitleIVBStatePlan.pdf>

### b. **Title IV-E STATE PLAN**

<http://www.dcf.ks.gov/services/PPS/Documents/Other/IVESTATEPLAN.pdf>

### c. **AFCARS**

This report covers program review for Adoption and Foster Care Analysis and Reporting System (AFCARS). Our Federal Partners (ACF) collect case level information through AFCARS on all children in foster care for whom State child welfare agencies have responsibility for placement, care or supervision and on children who are adopted under the auspices of the State's public child welfare agency. AFCARS also includes information on foster and adoptive parents. ACF utilizes AFCARS data for a number of reasons such as Adoption Incentives Programs, Child Welfare Outcome Reports, Child and Family Services Reviews (CFSR) and Title IV-E Eligibility Reviews. States are required to submit AFCARS data semi-annually to ACF.

### d. **ROUND III Child & Family Services Review (CFSR)**

#### i. **CFSR State Assessment**

[http://www.dcf.ks.gov/services/PPS/Documents/Other/FinalVersionSWAssessment\\_February2015.pdf](http://www.dcf.ks.gov/services/PPS/Documents/Other/FinalVersionSWAssessment_February2015.pdf)

#### ii. **CFSR—Final Report**

[http://www.dcf.ks.gov/services/PPS/Documents/CFSR/KS\\_CFSR\\_Final\\_Report\\_2015.pdf](http://www.dcf.ks.gov/services/PPS/Documents/CFSR/KS_CFSR_Final_Report_2015.pdf)

#### iii. **CFSR—Program Improvement Plan (PIP)**

<http://www.dcf.ks.gov/services/PPS/Documents/CFSR/KansasCFSRRound3PIP.pdf>

## **RESOURCES**

### **Public Website Link to PPS Reports**

<http://www.dcf.ks.gov/services/PPS/Pages/PPSreports.aspx>

### **Public Website Link to Program Service Reports**

<http://www.dcf.ks.gov/services/PPS/Pages/PPSservices.aspx>

### **Link to PPS Policy and Procedural Manual**

<http://content.dcf.ks.gov/PPS/robohelp/PPMGenerate/>

### **Historical Federal Child Welfare Legislation**

<http://www.childwelfare.gov/pubs/otherpubs/majorfedlegis.cfm>

### **National Child Welfare Case Process (Overview)**

<https://training.cfsrportal.org/section-2-understanding-child-welfare-system/3008>